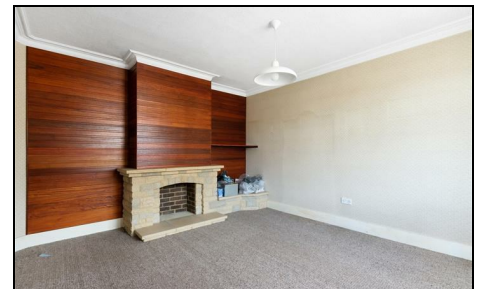


**Wandle Road  
Morden, SM4 6AJ**

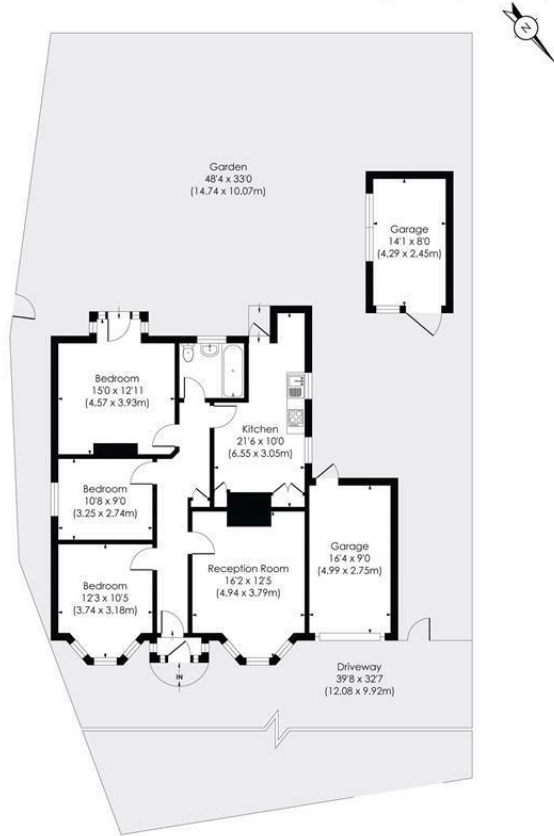
**£725,000 Freehold**



A detached three-bedroom bungalow situated in the sought-after Ravensbury area of Morden. The accommodation comprises a bay-fronted reception room with feature fireplace, three well-proportioned bedrooms, family bathroom with original avocado suite, and a spacious kitchen/dining room overlooking the rear garden. Externally, the property benefits from a well-maintained rear garden, garage, additional storage outbuilding and extensive off-street parking for multiple vehicles. Offering scope for modernisation, the property is conveniently located for Morden Underground Station, nearby tram links, local bus routes, Morden Hall Park, Ravensbury Park and the Wandle Trail.

**WANDLE ROAD, SM4**

Approx. Gross Internal Floor Area  
**945 Sq. ft/87.82 Sq. m (Excl. Garages)**  
**Garages: 260 Sq. ft/24.18 Sq. m**



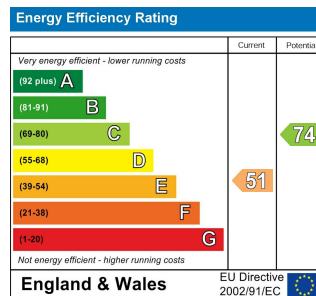
GROUND FLOOR

© Pixangle Property Marketing Ltd. info@pixangle.com Tel: 0208 870 2118



This floor plan has been prepared for the purpose of illustration only in accordance with the latestRICS code of measuring practice and is not to scale. All measurements and areas are approximate and whilst every effort has been made to ensure the accuracy of the plan contained here, no responsibility is taken for any error, omission or misstatement.

- Detached Bungalow
- Three Bedrooms
- Spacious Kitchen/Dining Room
- Near Morden Hall Park & the Wandle Trail
- Garage & Additional Storage Building
- Extensive Off-Street Parking
- Close to Morden Underground Station, Tram Links & Bus Routes
- Freehold
- Council Tax Band - E
- EPC - TBC



**For Free Mortgage Quote and Best Mortgage Rates, call Ellisons Mortgage Advisor on 0208 543 1166**



Although these particulars are believed to be correct, their accuracy is not guaranteed and they do not form part of any contract.

**Celebrating 30 years of successful Sales and Lettings in Merton**

